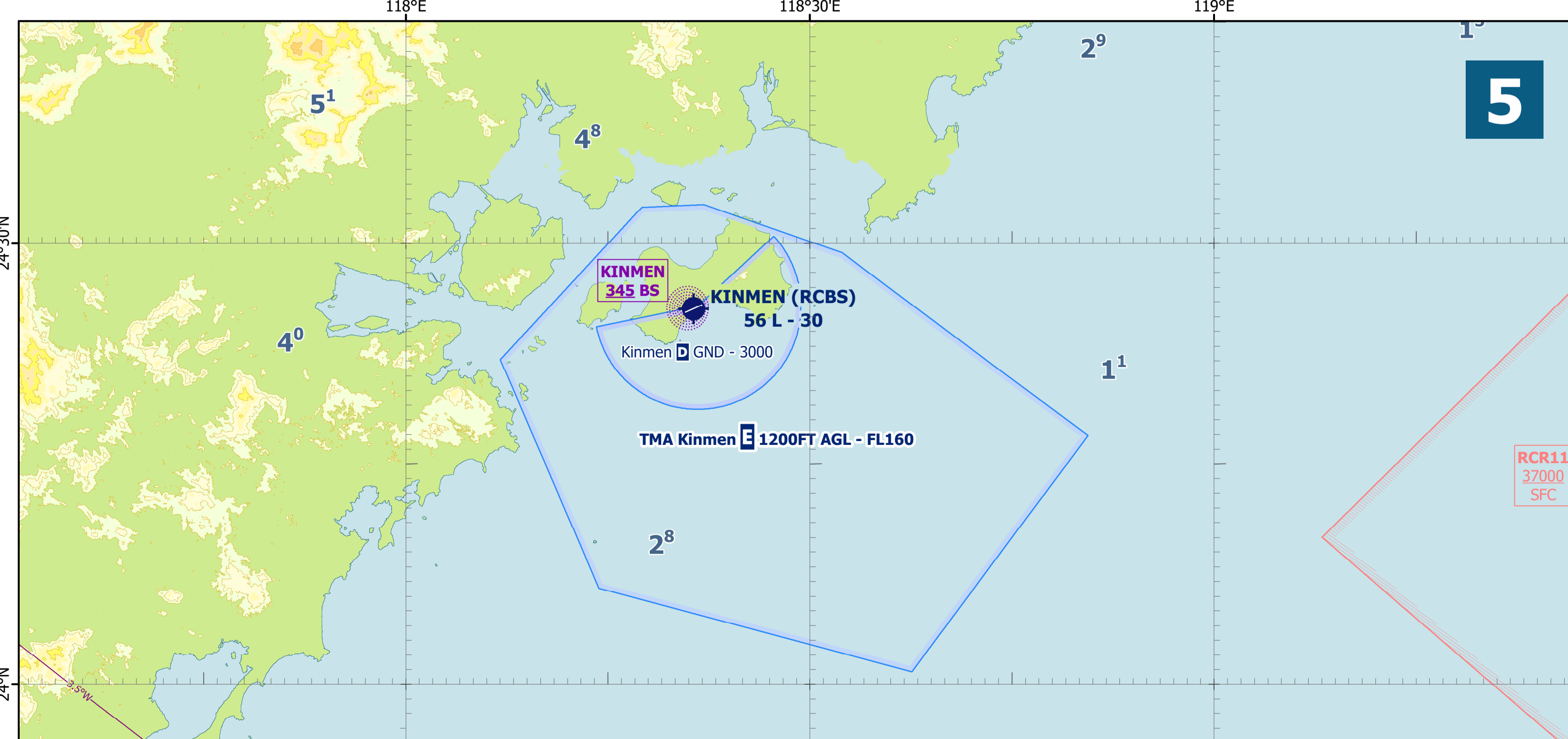
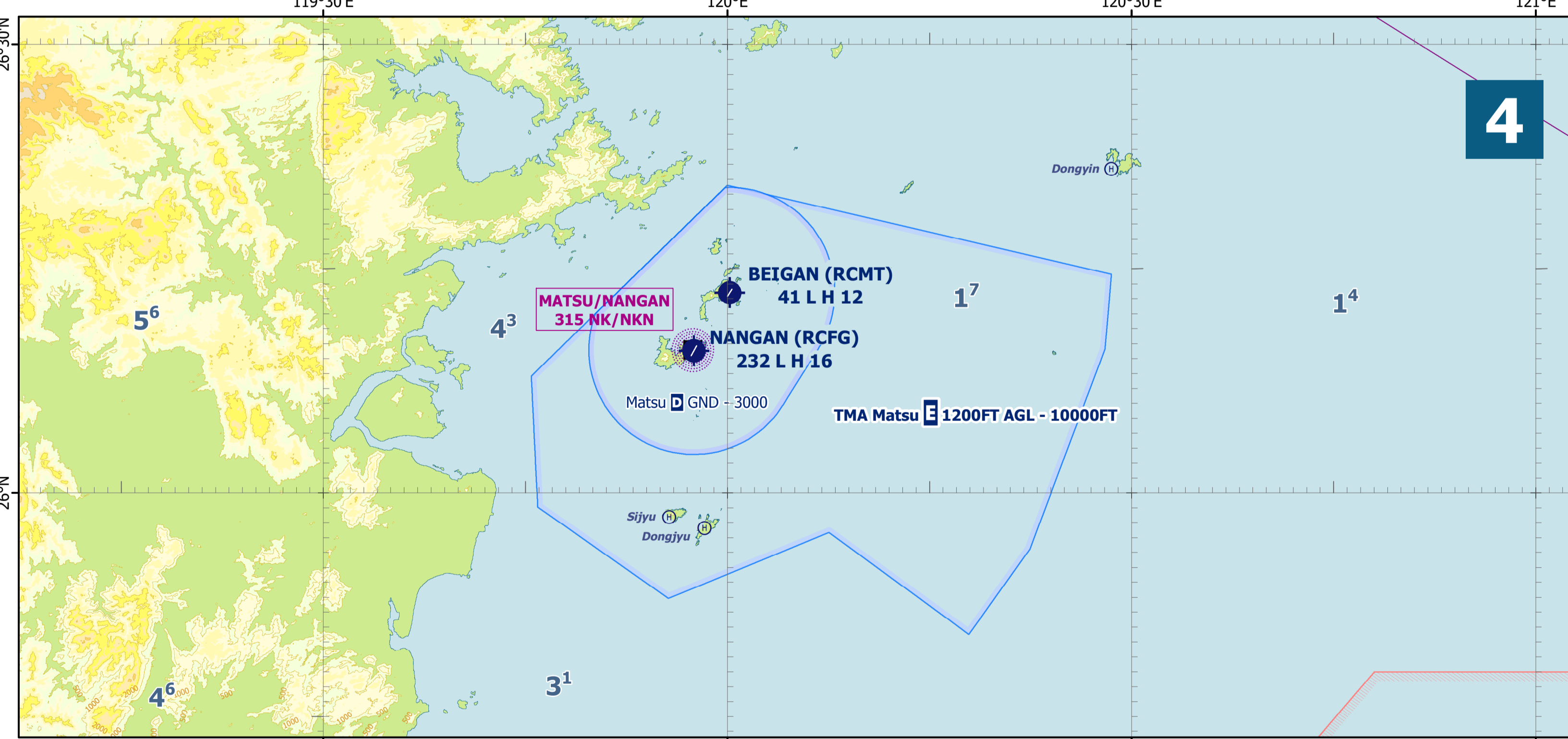
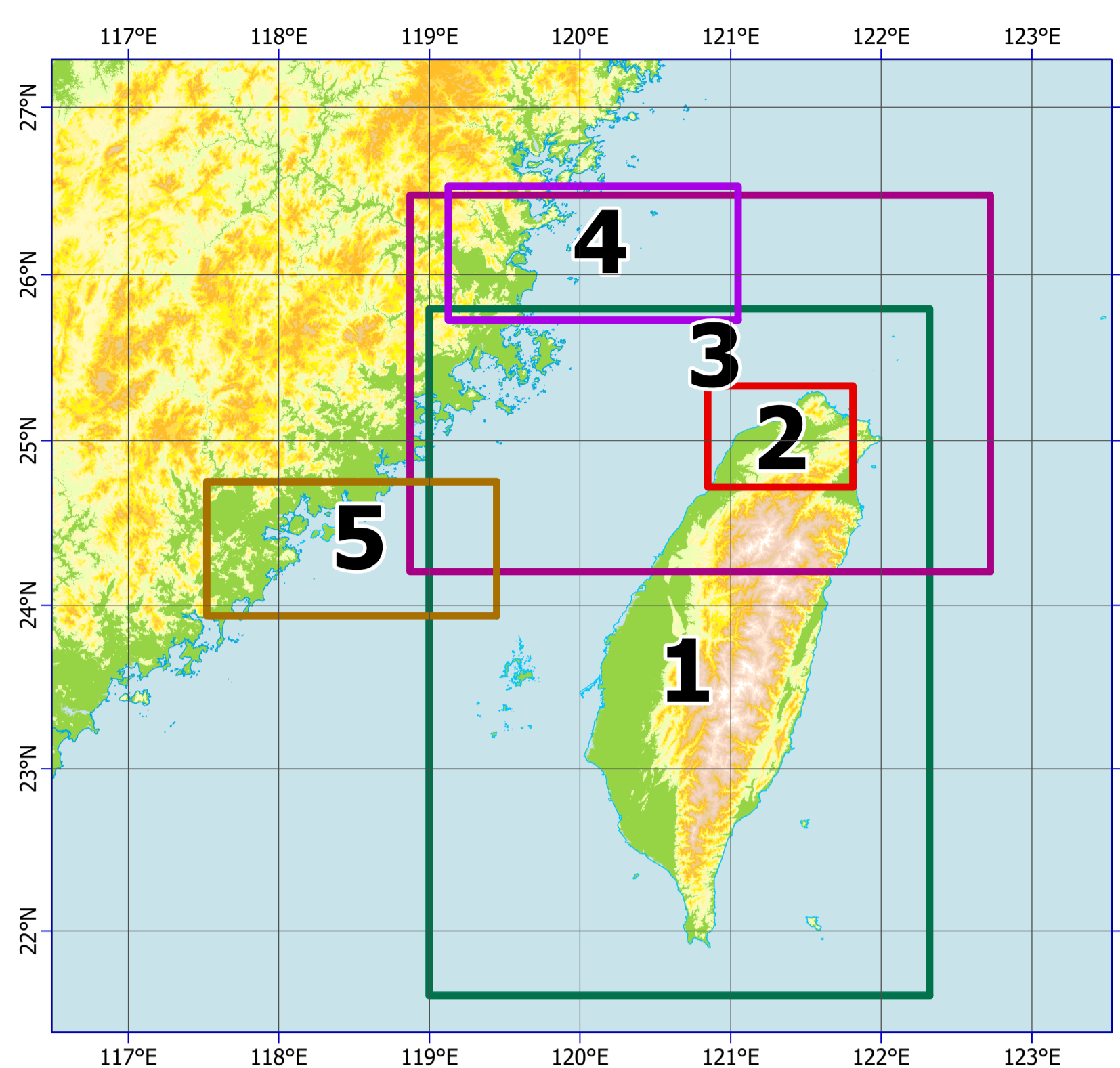


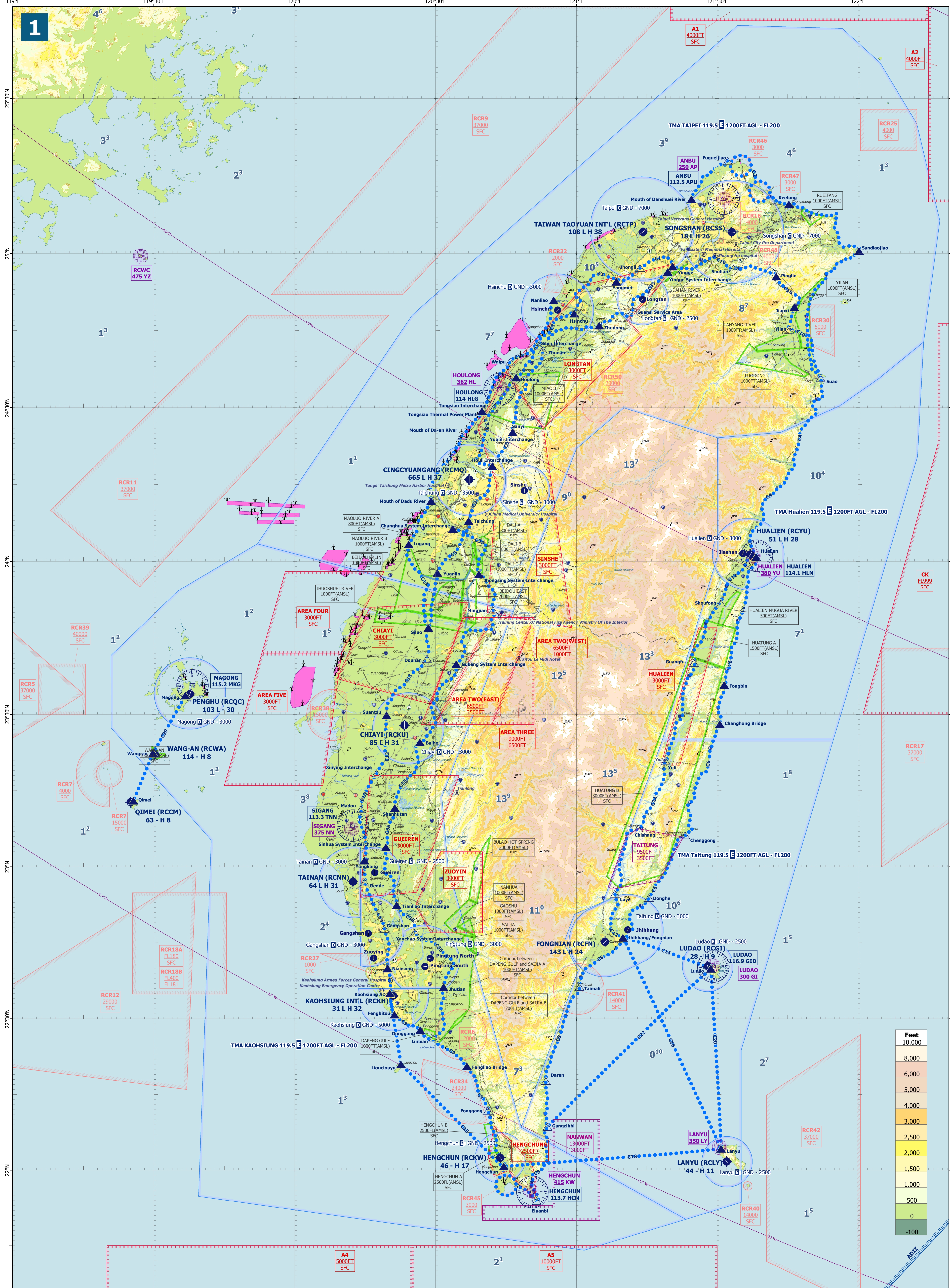
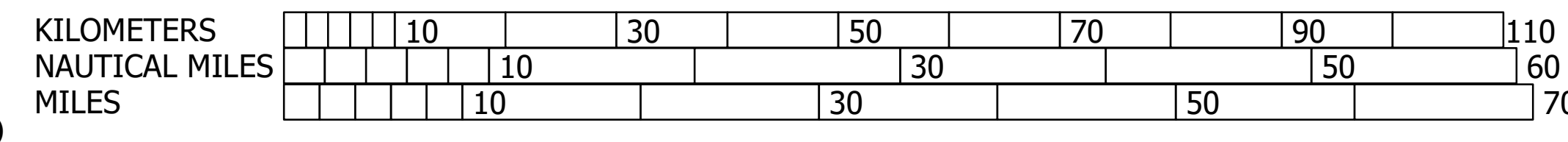
Date of Aeronautical Information: **02 May 2024**



LEGEND / 圖例

- | | |
|--|---|
| Name of aerodrome
機場名稱 | ICAO Location Indicator
航用地名 |
| Elevation in feet
標高(呎) | Length of longest runway in hundreds of meter
最高跑道長度(公尺) |
| Minimum lighting - obstacles, boundary or runway lights and lighted wind indicator or landing direction indicator
最低燈標 - 障礙物或跑道燈標、有燈光之風向標或落地方向指示燈 | Runway hard surface, normally all weather
跑道硬表面、通常全天候 |
| Civil Airport (Land)
民用機場(陸地) | Visual flight path with compulsory reporting point
目視飛行航路與強制報告點 |
| Military Airport (Land)
*Only list airport name
*僅標註機場名稱 | Visual flight path with non-compulsory reporting point
目視飛行航路與非強制報告點 |
| Heliport
直升機場 | Helicopter route H1 with compulsory reporting point
H1 直升飛機航路與強制報告點 |
| Compass rose
羅盤方位 | Helicopter route H1 with non-compulsory reporting point
H1 直升飛機航路與非強制報告點 |
| Non-directional radio beacon
NDB
無線電 | Helicopter route H2 with compulsory reporting point
H2 直升飛機航路與強制報告點 |
| NDB-DME
同址之無線電與測距儀 | Helicopter route H2 with non-compulsory reporting point
H2 直升飛機航路與非強制報告點 |
| Collocated VOR and TACAN VORTAC
同址之特高頻多頻導航與極高頻航向空導航設施 | Restricted VFR route with compulsory reporting point
限制目視飛行航路與強制報告點 |
| Collocated VOR and DME VOR/DME
同址之特高頻多頻導航與測距儀 | Restricted VFR route with non-compulsory reporting point
限制目視飛行航路與非強制報告點 |
| Distance measuring equipment
測距儀 | Airspace class B, C, D, E surface
空域類別: B - C - D - Es |
| Road and rail/道路與鐵路 | Airspace class E
空域類別: E |
| Primary road
主要道路 | Air defence identification zone
防空識別區 |
| Secondary road
次要道路 | Restricted area
限制空域 |
| Road
道路 | Military training area
軍事訓練空域 |
| Rail
鐵路或高捷鐵路 | Civil training area
民用訓練空域 |
| Rail Station
鐵路或高捷鐵路車站 | Ultra-light vehicle area
超輕型載具活動空域 |
| Miscellaneous/其他 | Ultra-light vehicle route
超輕型載具飛行航路 |
| City or large town
城市或大鎮 | Contour (feet)
等高線(呎) |
| Town or village
鎮或村莊 | Spot elevation (feet)
標高點(呎) |
| Wind turbine
風力發電機 | Maximum Elevation Figure MEF
最高障礙物高度(呎) |
| Wind turbines - minor group and group in major area
風力發電機(區域) | Shore line
海岸線 |
| Prominent transmission line
顯著之傳輸電線 | River and lake
河川與湖泊 |
| Isogonical line of isogon
等磁差線 | |

Reference Scale: **1:500,000**
 Projection: Mercator
 Geoidic Datum: WGS 1984
 Isogonic Line: 05 May 2015
 Terrain: 17 Oct 2011 (Aster GDEM V2)



Reference Scale: **1:500,000**
 Projection: Mercator
 Geoidic Datum: WGS 1984
 Isogonic Line: 05 May 2015
 Terrain: 17 Oct 2011 (Aster GDEM V2)

